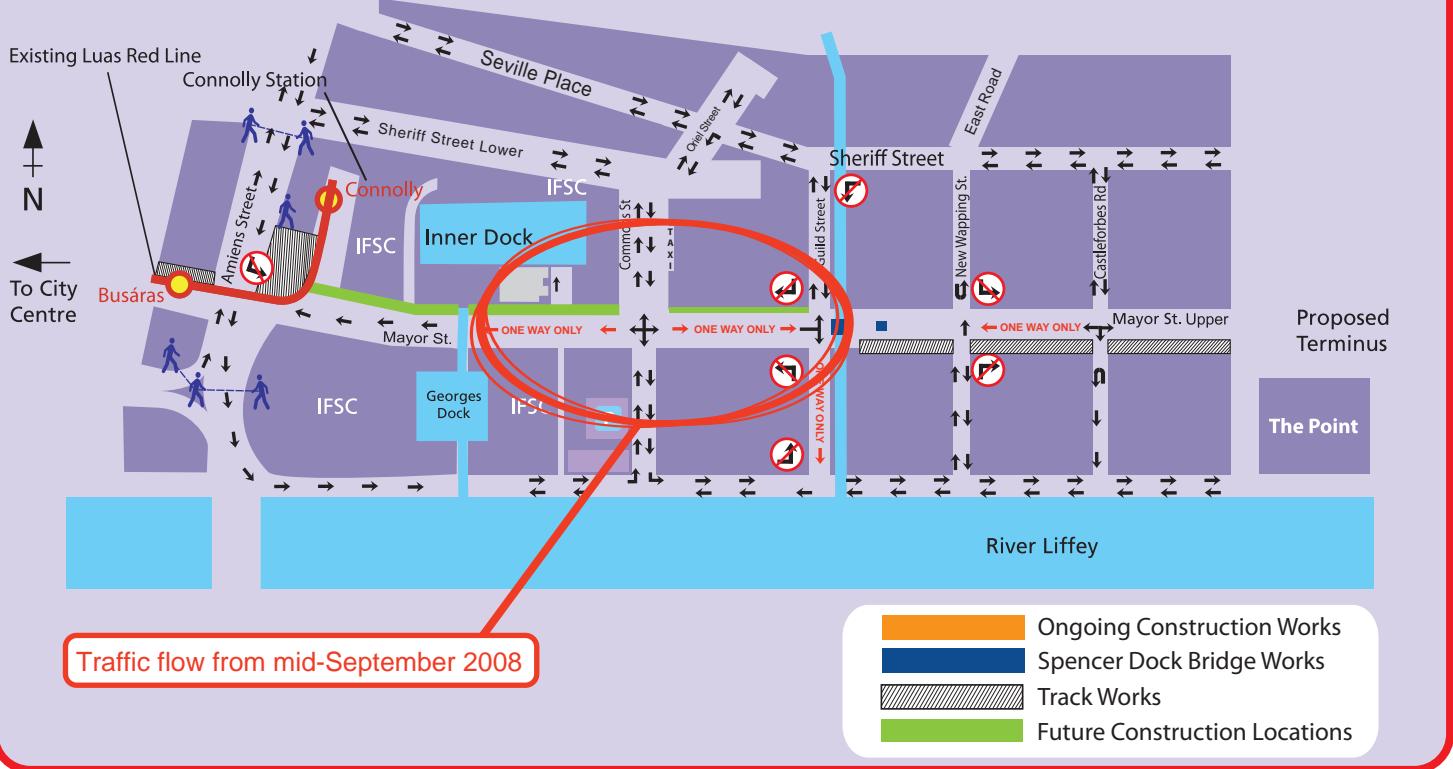


## Mayor Street Traffic Diversions and Construction Works



### TRACK WORKS

#### Busáras and Connolly

The new track work for the delta junction will be completed on 07 September 2008 and this will permit the reopening of the Red Line to Connolly. This new delta junction (triangular shaped track junction) will allow the trams on the Red Line:

- To continue from the Busáras stop straight down to The Point (when the extension is complete)
- To terminate at Connolly for passengers who require further rail connections (from early September).

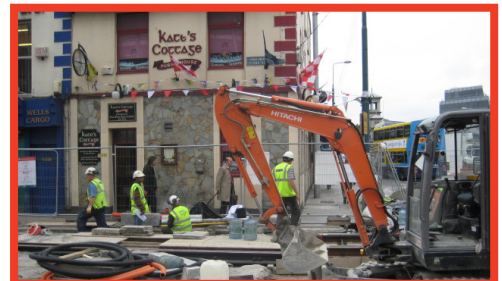
The Railway Procurement Agency and Luas would like to thank everyone for their patience and co-operation during these last months. **We aim to restore the traffic flow on Amiens Street for road users and resume full service on the Luas Red Line from 07 September 2008.** This will be confirmed closer to the date. However, access to the IFSC from Amiens street will remain via North Wall Quay and Commons Street.

#### Between Amiens Street and Commons Street

The installation of the permanent footpath and carriageway layout is due to commence on the north side of Mayor Street Lower in mid-September. The removal of the existing road surface will progress from Amiens Street towards Commons Street during the month of September. The first phase of the track works will involve construction of new kerb lines and works to footpaths as well as road works on the northern side of the road. The traffic flow remains one way from Commons Street towards Amiens Street.

#### Between Commons Street and Guild Street

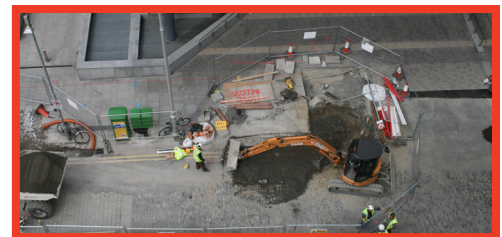
Works on the footpaths commenced in August on the northern side of Mayor Street Lower between Guild Street and Mayor Square. These works will now progress towards Commons Street junction. The traffic flow remains one way from Commons Street towards Guild Street.



Special Track at Amiens Street



Civil works at Mayor Street Lower



## Mayor Street Upper

Track works on Mayor Street Upper from the Point down to Spencer Dock are progressing well. The current one-way traffic systems on New Wapping Street and Castleforbes Road will remain in place for the duration of the works. We would like to remind road users, in the interest of health and safety to obey the following diversion routes:

Heading from the Quays to New Wapping Street there will be two-way traffic up to the junction with Mayor Street Upper. Drivers will be able to drive through the junction one way northbound (in the direction of Sheriff Street.) There is no through traffic from Sheriff Street to the Quays along New Wapping Street.

Heading from Sheriff Street to Castleforbes Road, there is two-way traffic up to the junction with Mayor Street Upper and there is access only through the junction one way southbound (in the direction of the Quays.) There is no through traffic from the Quays to Sheriff Street along Castleforbes Road.

## UTILITY DIVERSIONS

All utility diversions will be completed by mid-September and the remaining sites handed over to the track works contractor as the works are completed.

## BRIDGE WORKS

### Spencer Dock Bridge

Good progress was made on the Spencer Dock Bridge during the last month. The construction of both abutments is completed and the main bridge deck formwork is in place. Placement of deck reinforcement is at an advanced stage and the installation of the post tensioning ducts for the bridge deck will commence shortly.



Spencer Dock Bridge



Spencer Dock Bridge

## DUBLIN CITY COUNCIL - WORKS ON GUILD STREET

As part of the upgrade works on Guild Street, the City Council introduced a "no left hand turn" from Upper Sheriff Street to Guild Street on 26th August 2008. This is a permanent arrangement. If you have any queries please do not hesitate to contact Ksawery Hession at (01) 2222 595 or e-mail [sev.hession@dublincity.ie](mailto:sev.hession@dublincity.ie). You will find all details on: <http://www.dublincity.ie/RoadsandTraffic/MajorTransportProjects/Pages/GuildStreetReconstructionWorks.aspx>

## OPEN FORUM MEETINGS

Come in for a cup of coffee between 7.30am and 9.00am in the National College of Ireland on Mayor Square. Our team is happy to meet the residents, commuters and businesses to answer any questions you might have. Our next meeting is coming up on:

Thursday 18th September 2008

## I SHOP THE LINE

We encourage people to support local business in the multitude of shops, services and venues available to them. Details of the shops based in proximity of the construction of the new Luas Docklands are available on:

<http://www.rpa.ie/luas/commercial/advertising>

Please note when you submit your contact details you agree to be added to the RPA Public Consultation Database. To remove your details from the Database simply send us an email to [info@rpa.ie](mailto:info@rpa.ie). All contact information provided to RPA will be treated as confidential; see [www.rpa.ie](http://www.rpa.ie) for details of RPA Privacy Policy.