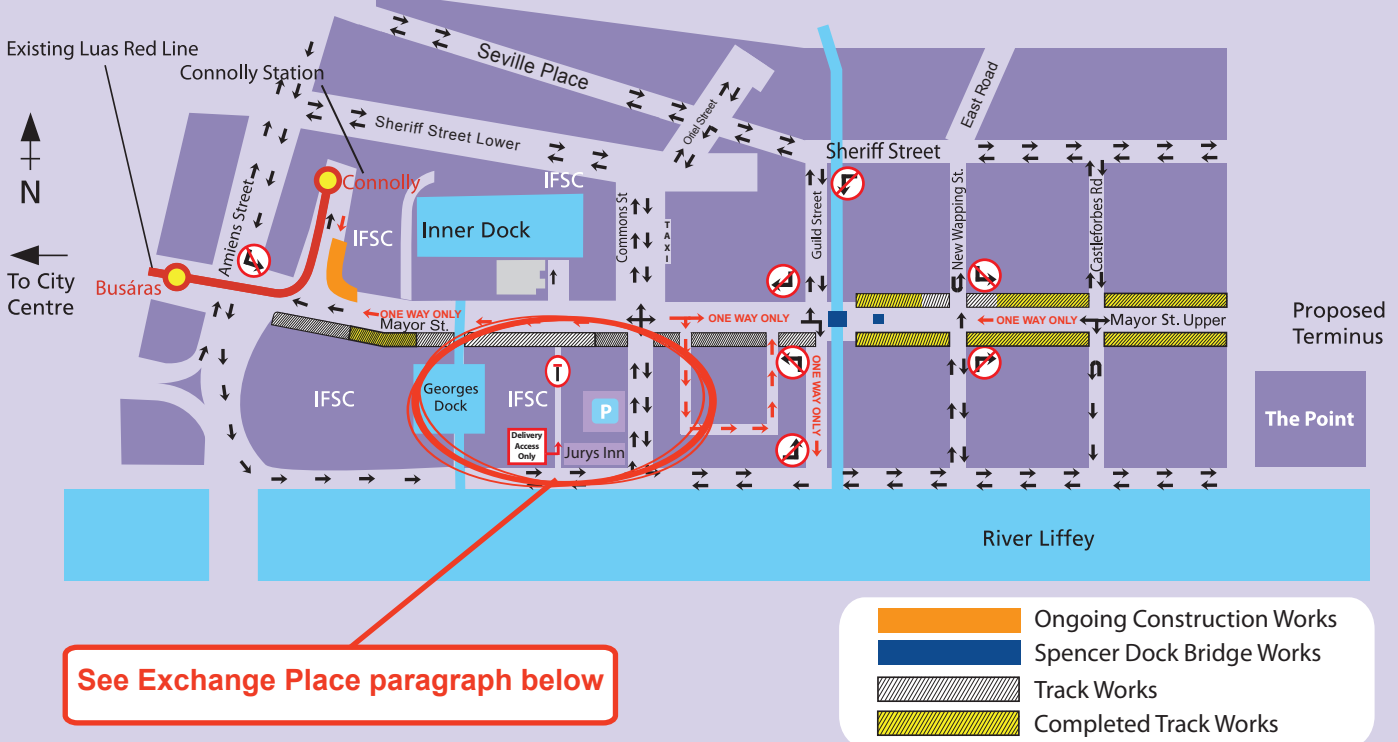


Mayor Street Traffic Diversions and Construction Works



TRACK WORKS

MAYOR STREET LOWER

Drainage connections at Harbourmaster Place

The last three deep drainage manholes at Harbour Master Place are under construction.

The road alignment has been moved towards Connolly Station wall to ensure a continuous two-way traffic flow and to ensure safe pedestrian and vehicular movements. A priority traffic scheme has been implemented at Harbourmaster Place. Traffic exiting Harbourmaster Place onto Mayor Street Lower will have to yield to incoming traffic.

Between Amiens Street and George's Dock Bridge

The vehicle entrance access to the La Touche House car park from Mayor Street Lower will be closed off for the installation of track in this area. The occupants of La Touche House, AIB and IFSC House will continue to have access the car park via the Quays. Exiting the car park will be possible via the Podium onto Amiens Street for the duration of the works. These works are due to start mid-February.

The rail works on the south side of the street in front of Munchies, O'Briens and The Laundry and Dry Cleaning Shop and will be completed in February.

Between George's Dock Bridge and Commons Street

The south footpath near the Spar shop has been temporarily closed. We would like to ask pedestrians, in the interest of health and safety, to follow the signposted routes and remain on the footpaths.

The last of the drainage works in this area (the two deep drainage manhole connections) will be complete in February. Once completed, our contractor Mpack will start excavating the south side of the street to install tracks from George's Dock Bridge to Commons Street.

Exchange Place

During the track laying works, the access to Exchange Place from Mayor Street Lower will be temporarily closed for a duration of two to three months. An alternative "local access/delivery only" entrance via the gate of Jurys Inn on Custom House Quay will be provided for businesses operating in 1 - 12 Exchange Place and the CHQ building. Pedestrians will have access to Exchange Place at all times and all businesses will be accessible as normal. These works are due to commence in the second half of February.

Between Commons Street and Guild Street

Track works are progressing well between Commons Street and Guild Street. Our contractor has started laying rails (step 7 in the process see page 3 step by step process) and constructing the Mayor Square Stop.

Alderman Way

To allow a continuous traffic flow into Alderman Way during the track laying works, our contractor has moved the work sites into one lane of the roadway at both entrances of Alderman Way and is executing the works in two phases.

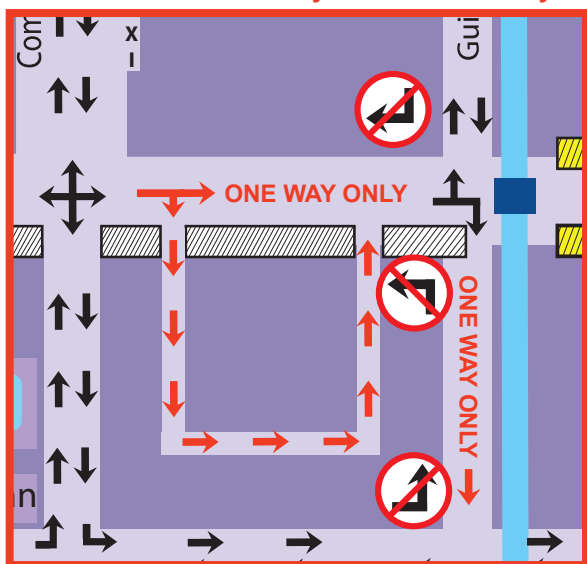
PHASE 1 (current phase since 10th January until late February)

The fence lines are set up to enter one way at Alderman Way West (near Bank Of Ireland) and to exit at Alderman Way East (near Guild House) (see attached image)

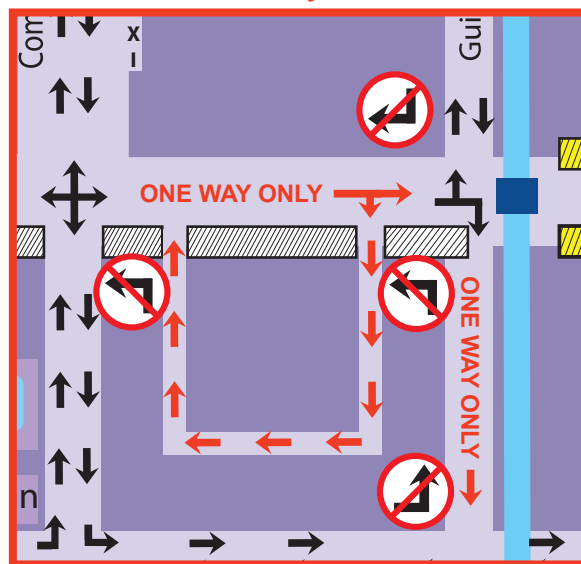
PHASE 2 (phase to start late February and continue for 10-12 weeks)

The fence lines will be set up to enter one way at Alderman Way East (near Guild House) and to exit at Alderman Way West (near Bank Of Ireland) (see attached image)

PHASE 1 From 10th January until late February 2009



PHASE 2 From February 2009 for 10-12 weeks



MAYOR STREET UPPER

Between Spencer Dock and New Wapping Street

Track works are nearing completion in this area. Following the surfacing and finishing works of the tracks, the footpaths will be installed on the south footpath of Mayor Street Upper.

Once these works have been concluded the works will switch towards the north side of the road for the footpath works as well as installation of foundations of the poles for the overhead power lines (OCS) and a parking bay in front of the houses 1 – 6 Upper Mayor Street.

Between New Wapping Street and Castleforbes Road

The track works are progressing well on Mayor Street Upper between New Wapping Street and Castleforbes Road. The excavations for the last section of track and footpath works have started. During the track laying in front of 7-10 Mayor Street Upper, there will be some deliveries of concrete and rail which will require short temporary closures of this section of the street due to space constraints. During these short closures through traffic from Sherriff Street and Castleforbes road will be diverted via the Quays back to New Wapping Street. We would like to thank you for your co-operation and patience during this phase of the construction.

Traffic Flow in the Mayor Street Upper Area

Since the re-opening of The O2 there has been a heightened traffic activity for concerts and events. We would urge the visiting public to respect the residents parking on Mayor Street Upper and follow the one-way traffic flow as outlined below.

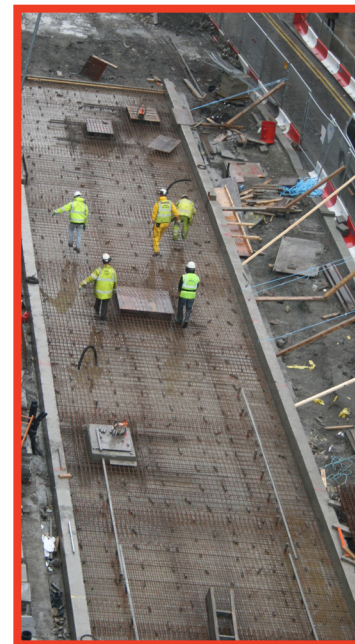
Heading from the Quays to New Wapping Street there is two-way traffic up to the junction with Mayor Street Upper. Drivers are able to drive through the junction one way northbound (in the direction of Sheriff Street.) There is no through traffic from Sheriff Street to the Quays along New Wapping Street.

Heading from Sheriff Street to Castleforbes Road, there is two-way traffic up to the junction with Mayor Street Upper and there is access only through the junction one way southbound (in the direction of the Quays.) There is no through traffic from the Quays to Sheriff Street along Castleforbes Road.

TRACK INSTALLATION – A STEP BY STEP PROCESS

Different steps explained

- Step 1 Excavate the roadway to the correct depth.
- Step 2 Install ducts which will carry the power and systems cables.
- Step 3 Reconstruct the ground level in layers to ensure a solid base for the reinforced concrete track slab.
- Step 4 Construct the base layer of the reinforced concrete track slab. The reinforcement consists of two layers of steel mesh inside the concrete.
- Step 5 Deliver the rails to site once the structural reinforced concrete slab has achieved the required strength. A straight piece of track is 18 meters long on average.
- Step 6 Apply rubber coating to rail.
- Step 7 Align the rails into the correct position and raise them to the correct level.
- Step 8 Weld the rails together to form the track.
- Step 9 Pour second layer of concrete to a level halfway up the rail.
- Step 10 Construct the exposed aggregate concrete shoulders on either side of the rail up to the top of the rail. These “shoulders” are created to protect the rubber around the rails and prevent it from being damaged by vehicular traffic.
- Step 11 Install the finished surface between the concrete shoulders - tarmac, historic cobbles or granite blocks.



Track Works at Mayor Street Lower

OPEN FORUM MEETINGS

If you have any questions for the engineers or the construction team you can pop in to the National College of Ireland on Mayor Square and talk to us. In order for the commuters, residents and businesses to have a chance to come in we have organised the meetings at alternating times. Meetings will take place on the following dates and times:

Thursday 12th February 2009: morning meeting from 07h30 till 09h00
Thursday 12th March 2009: evening meeting from 17h00 till 19h00

I SHOP THE LINE

We encourage people to support local business in the multitude of shops, services and venues available to them. Details of the shops based in proximity of the construction of the new Luas Docklands are available on:
http://www.rpa.ie/en/projects/luas_docklands/Pages/IShoptheLine.aspx

Please note when you submit your contact details you agree to be added to the RPA Public Consultation Database. To remove your details from the Database simply send us an email to info@rpa.ie. All contact information provided to RPA will be treated as confidential; see www.rpa.ie for details of RPA Privacy Policy.

HEALTH AND SAFETY

As we progress works over the coming months, more roadway will be opened up. Please use this new road layout with caution as the new Luas tracks are now part of the road surface. It is important that cyclists cross the tracks as close to a right angle as possible to avoid their bicycle wheel getting caught in the Luas track.

Please note when you submit your contact details you agree to be added to the RPA Public Consultation Database. To remove your details from the Database simply send us an email to info@rpa.ie. All contact information provided to RPA will be treated as confidential; see www.rpa.ie for details of RPA Privacy Policy.

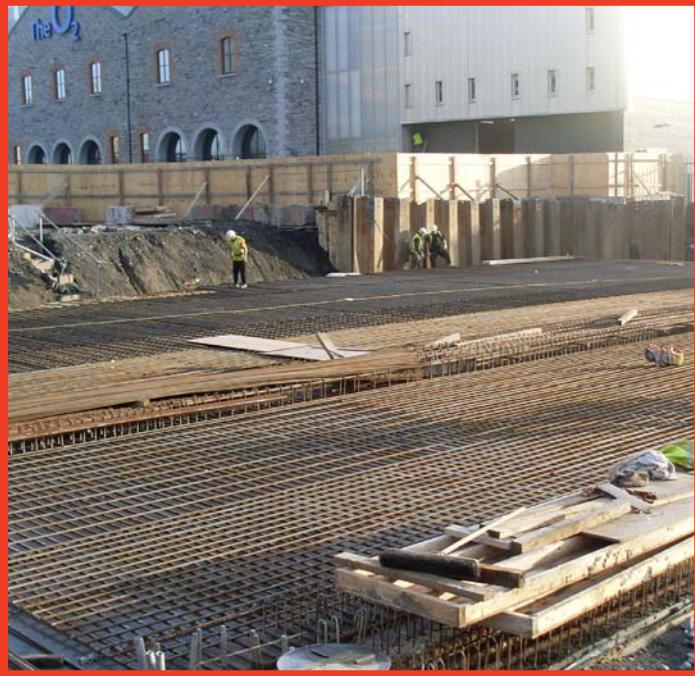
Passengers on board late 2009/early 2010

LUAS Docklands (LINE C1)

Construction Phase Update No.

19

04 February 2009



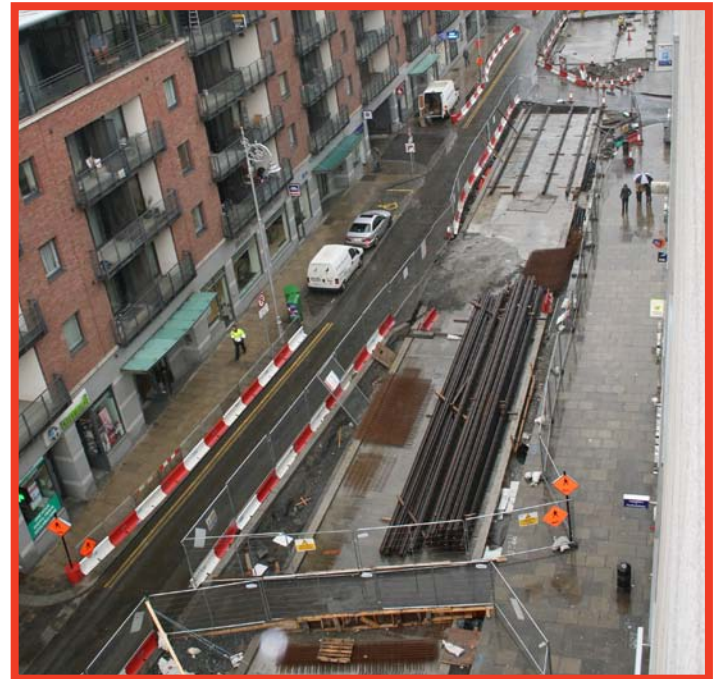
Future Terminus at The Point



Mayor Street Upper finished track



Spencer Street



Track Laying on Mayor Street Lower

Please note when you submit your contact details you agree to be added to the RPA Public Consultation Database. To remove your details from the Database simply send us an email to info@rpa.ie. All contact information provided to RPA will be treated as confidential; see www.rpa.ie for details of RPA Privacy Policy.