

TRACK WORKS

MAYOR STREET LOWER

Between La Touche House and George's Dock Bridge

Deep drainage works near the entrance of La Touche House and 2 Harbour Master Place are progressing well, the tunnelling for pipe works is due to be completed in March. The construction of manholes will then commence. Traffic lights are in place on both sides of Harbour Master Place to control traffic in this area. We would like to remind pedestrians to take care when crossing the street.

Final surfacing works for the tracks on the southern side of the road between the car park entrance to La Touche House and George's Dock Bridge will be completed in March. Upon completion, staff will be able to enter the car park once again from Mayor Street Lower. We would like to thank everyone in the area for their co-operation during these works.

Between George's Dock Bridge and Commons Street

In March the southern side of the street between George's Dock Bridge and Commons Street will be excavated in preparation for the installation of drainage connections, duct routes and the construction of the track slab. The construction of the George's Dock Stop near the CHQ building will follow the track works in this area.

COMMONS STREET JUNCTION - PARTIAL CLOSURES FROM 20TH MARCH UNTIL 10TH JULY 2008

To facilitate the installation of new Luas tracks in the Commons Street - Mayor Street Lower junction it is planned to implement two consecutive partial road closures of this junction. These partial closures will be similar to those undertaken in 2008 for the utility diversion works.

Passengers on board late 2009/early 2010

LUAS Docklands (Line C1)

Construction Phase Update No. **20** 10 March 2009

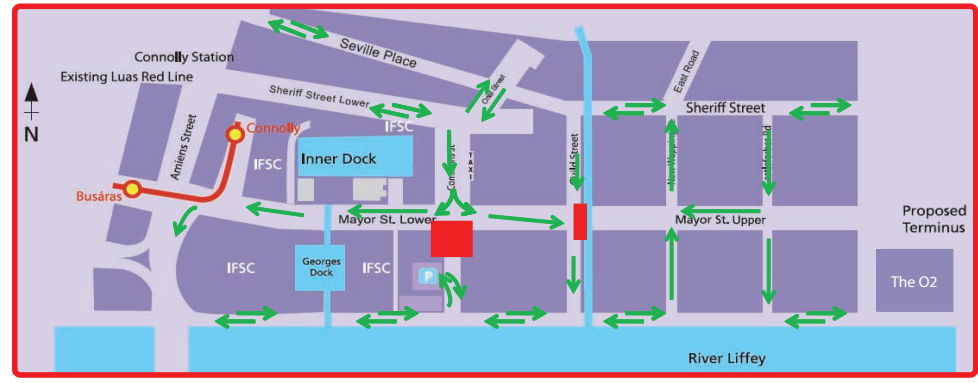
The junction closures are planned to commence on Friday, 20 March 2009 and continue until Friday, 10 July 2009; a period of 16 weeks.

TRAFFIC FLOW - FIRST PHASE FROM 20TH MARCH

During the first phase of the partial closure, works will be carried out on the south side of the junction; northbound traffic travelling from the Quays towards Mayor Street junction will not be able to access Mayor Street Lower or travel through the junction. Access to Park Rite on Commons Street will be maintained throughout this entire period from North Wall Quay.

Traffic travelling south-bound on Commons Street from Oriel Street/Sherriff Street will be able to access Mayor St. Lower during this stage of the works but will not be able to travel through the junction to the Quays. Diversion signs will be in place.

20 March 2009-May 2009
Commons Street Junction - Guild Street Junction - PARTIAL CLOSURE



TRAFFIC FLOW - SECOND PHASE TO START DURING MAY 2009

During the second stage of the planned closure, works will be carried out on the north side of the junction; traffic travelling south-bound on Commons Street from Oriel Street/Sherriff Street will not be able to access Mayor Street Lower or travel through the junction.

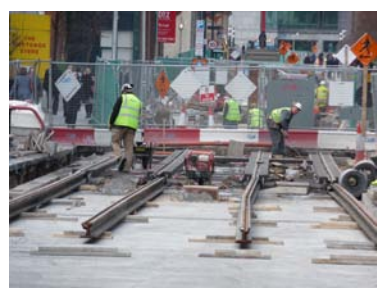
Traffic travelling northbound from the Quays towards Mayor Street junction will be able to access Mayor Street Lower during this stage of the works but will not be able to travel through the junction to Oriel Street/Sherriff Street. Diversion signs will be in place.

Access to Park Rite on Commons Street will be maintained throughout this entire period from North Wall Quay. Additional maps are available on http://www.rpa.ie/en/projects/luas_docklands/construction/Pages/default.aspx for visitors and commuters to prepare their journey through the construction works area.

Commons Street and Guild Street

35% of the rail in this section is in place and the construction of the Mayor Square stop is progressing. The finishing works to the track slab will commence shortly and the original cobbles which were taken up from Mayor Street Lower will be reused in the track area. The traffic flow remains one way from Commons Street towards Guild Street.

Track Works on Mayor Streer Upper



Track Works on Mayor Streer Lower



www.rpa.ie
info@rpa.ie
1800 67 64 64

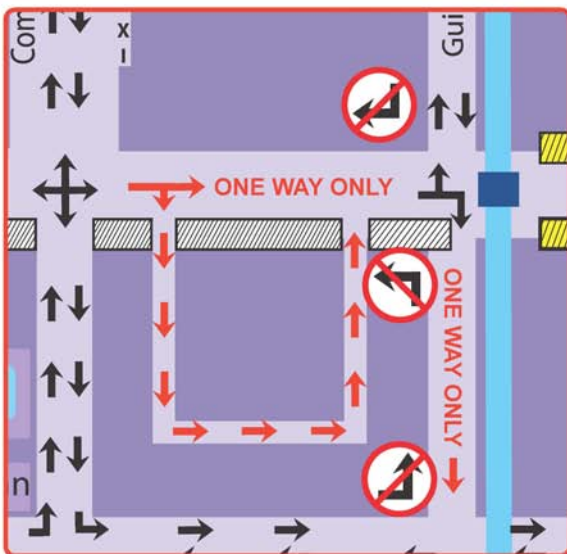


Track works on Mayor Street Lower

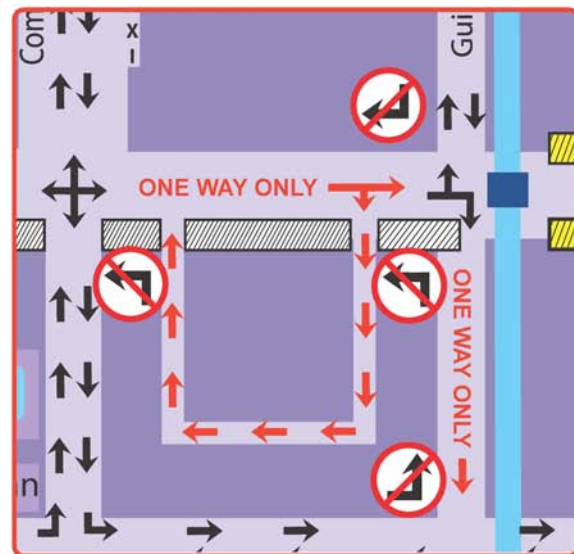
Alderman Way - Change of traffic flow direction

The first phase of this construction work at the junctions of Alderman Way and Mayor Street Lower is nearing completion. During the week commencing 23rd March 2009, the second phase works will commence and this entails changing the direction of traffic in Alderman Way and the access and egress arrangements. We would remind road users to obey the traffic signs and the one way traffic flow on Alderman Way.

Alderman Way Phase 1



Alderman Way Phase 2



PHASE 1 complete during the week commencing 23rd March 2009

The fence lines are set up to enter one way at Alderman Way West (near Bank Of Ireland) and to exit at Alderman Way East (near Guild House) (see attached image)

PHASE 2 start during the week commencing 23rd March and continue for 10-12 weeks

The fence lines will be set up to enter one way at Alderman Way East (near Guild House) and to exit at Alderman Way West (near Bank Of Ireland) (see attached image)

GUILD STREET JUNCTION - ONE WAY TRAFFIC DURING TRACK CONNECTION WORKS FROM 20TH MARCH 2009

The traffic management arrangements will be altered at the junction of Guild Street and Mayor Street on 20th March in order to link the tracks from the Spencer Dock Bridge with the track installed in the western half of Guild Street.

Due to space constraints, traffic on Guild Street will be restricted to one way traffic southbound and the left turn from Mayor Street onto Guild Street leading to Sherriff Street will be temporarily suspended for the duration of these works.

Spencer Dock

The final stage of track works has started in the Spencer Dock between Spencer Street / Park Lane and Mayor Street Upper over the substation. The construction of the new Spencer Dock Stop will follow the track installation in this area.

MAYOR STREET UPPER

Between Spencer Dock and Castleforbes Road

Track works have been completed in front of the residences of 1 - 6 Upper Mayor Street and similar progress was made in front of the houses 7-10 Upper Mayor Street.

During March 2009, works will commence on the installation of the foundations for the overhead power poles and the finishing works on the footpaths and parking bays.

Between Castleforbes Road and the Point Stop

The track works are progressing well on Mayor Street Upper between Castleforbes Road Junction and The Point Stop. Installation of foundations of the poles for the overhead power poles and the finishing works to the footpaths on the north side of the street will be complete by the end of March 2009.

Track laying through the junctions of New Wapping Street/ Mayor Street Upper and Castleforbes Road/Mayor Street Upper are nearing completion.

Traffic flow in the Mayor Street Upper Area

Since the re-opening of The O2, there has been a heightened traffic activity for concerts and events. We would urge the visiting public to respect the residents parking on Mayor Street Upper and follow the one-way traffic flow as outlined below.

Heading from the Quays to New Wapping Street there is two-way traffic up to the junction with Mayor Street Upper. Drivers are able to drive through the junction one way northbound (in the direction of Sheriff Street.) There is no through traffic from Sheriff Street to the Quays along New Wapping Street.

Heading from Sheriff Street to Castleforbes Road, there is two-way traffic up to the junction with Mayor Street Upper and there is access only through the junction one way southbound (in the direction of the Quays.) There is no through traffic from the Quays to Sheriff Street along Castleforbes Road.

BRIDGE WORKS

SPENCER DOCK BRIDGE

The construction of the Spencer Dock Bridge will be complete during March 2009 and works in the canal are now complete. The bridge handrails at the future viewing platforms are in place and over the coming months the final finishing works, such as installation of bridge lighting will be carried out.

The Luas tracks have already been installed on the Spencer Dock Bridge and will be connected to the tracks on Mayor Street Lower over the coming months. The boundary wall at Guild Street was removed to facilitate these works.

SAMUEL BECKETT BRIDGE CONSTRUCTION WORKS BY GRAHAM CONSTRUCTION ON BEHALF OF DUBLIN CITY COUNCIL

From Monday 30 March 2009 Graham Construction will be undertaking upgrade works at the junction of North Wall Quay and Guild Street on behalf of Dublin City Council to facilitate the construction of Samuel Beckett Bridge.

The works will be carried out every night from 8.00 p.m. to 6.00 a.m. Some weekend works may also be involved. During these works, the junction of Guild Street and North Wall Quay will be closed and all traffic exiting Mayor Street Lower will be directed north towards Seville Place. Access to the quays will be via Amiens Street or Castleforbes Road. Diversions signs will be in place and the contractor will be at hand to ensure access and egress is maintained in the area at all times. It is anticipated that the works will last 4 weeks. Information is available on 01 6708648. These works are not related to the Luas Line C1 works.

OPEN FORUM MEETINGS

The next open forum meeting will take place in the National College of Ireland on Mayor Square on Thursday 12th March 2009 from 17h00 to 19h00.

Passengers on
board late 2009/early 2010

LUAS Docklands (Line C1)

Construction Phase
Update No.

20

10 March 2009

RPA's construction team and engineers remain available for any future questions, queries or meetings. You can reach us on the free phone number 1800 67 64 64 or email info@rpa.ie

LUAS AS SCREENSAVER

In the anticipation of the Luas Opening during Winter 2009 / 2010, the RPA team has put up a visual message at Connolly Station regarding the remaining works before passengers can board the new Docklands Line C1 extension. The separate images for each season are available as screensavers and people are welcome to download the artwork by clicking the following link http://www.rpa.ie/en/projects/luas_docklands/construction/Pages/default.aspx.



HEALTH AND SAFETY

As we progress works over the coming months, more roadways and footpaths will be opened up. Please be aware that the new Luas tracks are now part of the new road surface layout. It is important that cyclists cross the tracks as close to a right angle as possible to avoid their bicycle wheel getting caught in the Luas track.

I SHOP THE LINE

RPA encourages people to support local business in the multitude of shops, services and venues available to them. Details of the shops close to the construction of the new Luas Docklands Line C1 are available on: http://www.rpa.ie/en/projects/luas_docklands/Pages/IShoptheLine.aspx

Please note when you submit your contact details you agree to be added to the RPA Public Consultation Database. To remove your details from the Database simply send us an email to info@rpa.ie. All contact information provided to RPA will be treated as confidential; see [www.rpa.ie <outbind://187/Local%20Settings/Temporary%20Internet%20Files/OLK54/www.rpa.ie>](http://www.rpa.ie/outbind://187/Local%20Settings/Temporary%20Internet%20Files/OLK54/www.rpa.ie) for details of RPA Privacy Policy.