

## TRACK WORKS

### MAYOR STREET LOWER

#### Between La Touche House and George's Dock Bridge

The drainage and footpath works in the area of 2 Harbour Master Place will be completed in June. The installation of the final section of track forming the delta junction has commenced in this area. This track work will be installed in stages to ensure continuous access and egress to Harbour Master Place. The temporary traffic lights will remain in place to manage the traffic flow in and out of Harbour Master Place. In the interest of Health and Safety, we would ask all road users and pedestrians to follow the signs and use the walkways provided.

The installation of the northern tracks between 2 Harbour Master Place and the Harbourmaster pub is ongoing. In parallel with these works, the bases for the poles which will carry the Overhead Contact System (OCS) are being installed. The loading bay will be moved towards George's Dock Bridge in front of the Spar shop shortly to facilitate works on the eastern side of George's Dock Bridge.

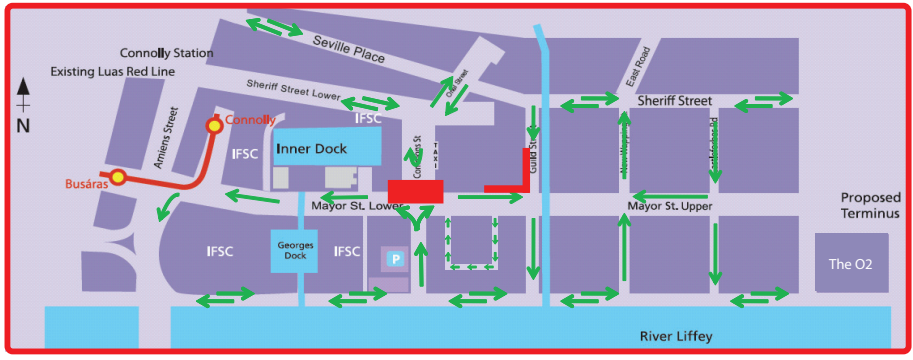
#### Between George's Dock Bridge and Commons Street

The track installation and construction of the southern platform structure of George's Dock Stop will be completed by mid June and the traffic will then be swapped to the south side of the road while works commence on the northern platform. Pedestrian movements will remain as they are currently - restricted to the southern side of Mayor Street Lower. Due to the limited space available during construction footpath widths are restricted in this area for the duration of the stop construction. Our contractors are working extended hours in this area to reduce the duration of the works.

The track installation across the car park entrances between 1 and 2 George's Dock and the laneway between 3 and 5 George's Dock will be carried out in two phases to maintain access to both car parks at all times. The entrance and exit to the underground car park between George's Dock 1 and 2 will be operating as a single lane stop/go basis during the track installation works. We would like to thank all users of the car park for their co-operation in this final phase of the track construction.

## COMMONS STREET JUNCTION - PARTIAL CLOSURES FROM 20 MARCH UNTIL 20 JULY 2009

On 20 May the first part of the track installation works in the Commons Street/ Mayor Street Lower Junction was completed and the second phase of the track installation has now commenced. This involves the installation of the tracks on the northern side of this junction. The traffic management for this phase is explained in the map and text below.



Traffic Flow - Mayor Street Lower Phase 2 to start in May

### TRAFFIC FLOW DESCRIPTION - PHASE 2

Traffic travelling northbound from the Quays towards Mayor Street junction will be able to access Mayor Street Lower during this stage of the works but will not be able to travel through the junction to Oriel Street/Sherriff Street. Access from Seville Place to Commons Street is diverted via Amiens Street and the North Wall Quay. Paid parking in Park Rite on Commons Street and NCI car park on Alderman Way will be maintained throughout the works.

### Between Commons Street and Guild Street

A lot of original cobbles have been re-used in the track area between Commons Street and Guild Street. Final surfacing of the footpath is complete at Guild House and works are continuing now from Mace supermarket in the direction of Mayor Square. In addition, surfacing works will commence shortly from the corner of Commons Street towards Mayor Square.

### Alderman Way

The traffic flow remains one way from Commons Street towards Guild Street. The traffic management and fence lines are set up to enter one way at Alderman Way East (near Guild House) and to exit at Alderman Way West (near Bank Of Ireland) (see attached image). We remind road users, in the interest of Health and Safety, to obey the traffic signs and the one way traffic flow on Alderman Way.

### Guild Street Junction

Due to space constraints, traffic on Guild Street is restricted to one way traffic southbound and the left turn from Mayor Street onto Guild Street leading to Sherriff Street is temporarily suspended for the duration of these works.

The completed track installation through the Guild Street /Mayor Street Lower junction was completed in May. The traffic will be moved to the east side of Guild Street shortly to permit the construction of the north west corner of the junction and the final road surfacing works on the western side of the junction. Installation of traffic signals will then follow.

### Spencer Dock

The majority of the granite setts have been installed in the track area between Spencer Dock Bridge and the Spencer Dock Stop. The systems contractor has commenced cabling in this area and the installation of the electrical equipment in the underground substation. The Spencer Dock Stop is taking shape and the stop furniture has been installed.

## MAYOR STREET UPPER

### Between Spencer Dock and Castle Forbes Road

The last track in the New Wapping Street Junction has been installed and the finishing works to the footpaths on the four corners of New Wapping Street / Mayor Street junction is ongoing. The footpaths in front of the residences on Upper Mayor Street will start in June 2009.

### Between Castleforbes Road and the Point Stop

The footpath construction at the junction of Mayor Street Upper and Castleforbes Road is ongoing. The installation of the granite kerb lines on the western side of the junction are nearing completion. Further electrical system works and track drainage and traffic signal installation for the future network will be ongoing for a number of weeks in that part of the junction.

Footpath works are nearing completion on the northern side of the street between Castleforbes Road and the Point Stop. The construction of The Point Stop is well underway and the stop furniture is being installed currently.

### Traffic flow in the Mayor Street Upper Area

Since the re-opening of The O2, there has been an increase in traffic activity for concerts and events. We would urge the visiting public to respect the residents parking on Mayor Street Upper and follow the one-way traffic flow as outlined below.

Heading from the Quays to New Wapping Street there is two-way traffic up to the junction with Mayor Street Upper. Drivers are able to drive through the junction one way northbound (in the direction of Sheriff Street.) There is no through traffic from Sheriff Street to the Quays along New Wapping Street.

Heading from Sheriff Street to Castleforbes Road, there is two-way traffic up to the junction with Mayor Street Upper and there is access only through the junction one way southbound (in the direction of the Quays.) There is no through traffic from the Quays to Sheriff Street along Castleforbes Road.

## SPENCER DOCK BRIDGE

The Spencer Dock Bridge was opened to pedestrians in May. From 4pm on 16 June 2009 onwards the bridge will be open to westbound vehicular traffic exiting from Spencer Dock. Vehicles using this route to exit from Spencer Dock will be required to turn left (southbound) onto Guild Street in the direction of North Wall Quay.



Spencer Dock Bridge

## HEALTH AND SAFETY

As we progress works over the coming months, more roadways and footpaths will be re-opened. Please be aware that the new Luas tracks are now part of the new road surface layout. It is important that cyclists cross the tracks as close to a right angle as possible to avoid their bicycle wheel getting caught in the Luas track.

## I SHOP THE LINE

RPA encourages people to support local business in the multitude of shops, services and venues available to them. Details of the shops close to the construction of the new Luas Docklands Line C1 are available on: <[http://www.rpa.ie/en/projects/luas\\_docklands/Pages/IShoptheLine.aspx](http://www.rpa.ie/en/projects/luas_docklands/Pages/IShoptheLine.aspx)>

Passengers on board late 2009/early 2010

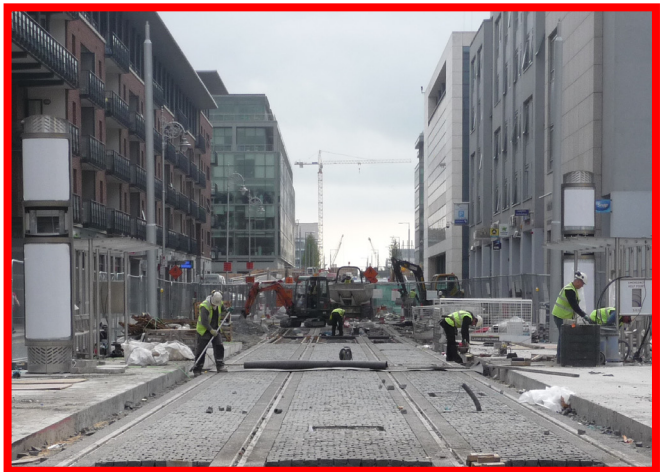
# LUAS Docklands (Line C1)

Construction Phase  
Update No.  
**22**  
16 June 2009

CONSTRUCTION OF THE FOUR LUAS STOPS ON THE DOCKLANDS LINE IS ONGOING



Georges Dock Stop



Mayor Square Stop



Spencer Dock Stop



The Point Stop

Please note when you submit your contact details you agree to be added to the RPA Public Consultation Database. To remove your details from the Database simply send us an email to [info@rpa.ie](mailto:info@rpa.ie). All contact information provided to RPA will be treated as confidential; see [www.rpa.ie](http://www.rpa.ie) <out-bind://187/Local%20Settings/Temporary%20Internet%20Files/OLK54/www.rpa.ie> for details of RPA Privacy Policy.



[www.rpa.ie](http://www.rpa.ie)  
[info@rpa.ie](mailto:info@rpa.ie)  
1800 67 64 64

