



**METRO NORTH
ORAL HEARING**

**Underwater & Intertidal
Archaeological Assessment
River Liffey etc
Part11**



Plate 28: Plan view of timber vertical timber piles (Type A) and adjacent horizontal timbers (Type F); 2m scale.

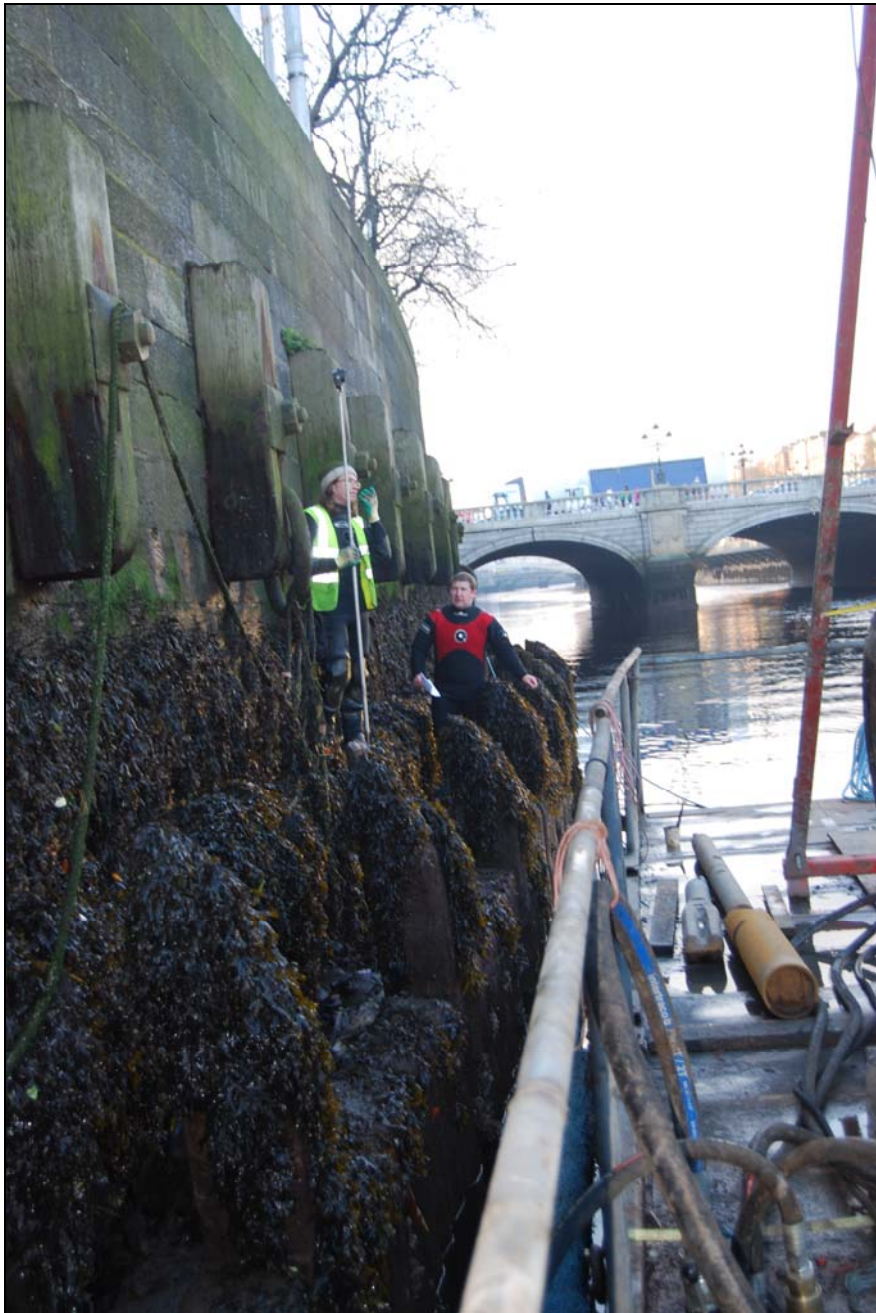


Plate 29: West-facing view along Burgh Quay showing total station recording of the timber revetment; plate annotated to show Type G timbers.



Plate 30: Detail shot of iron mooring hoop located along HWM of Eden Quay (Feature 3).



Plate 31: North-facing view of nineteenth-century drain located along the base of Eden Quay (Feature 3); 1m scale.



Plate 32: East-facing detail shot of masonry steps providing access to the river from Eden Quay (Feature 3); 1m scale.



Plate 33: North-facing view of masonry steps providing access to the river from Eden Quay (Feature 3); 1m scale.

A D C O

THE ARCHAEOLOGICAL DIVING COMPANY LTD

- **Environmental Impact Assessment**
- **Riverine, Intertidal, Underwater Assessment**
- **Underwater Investigation and Excavation**
- **Monitoring of Dredging and Marine Construction projects**
- **Maritime Heritage Consultancy**
- **Accords to HSAHSE Diving at Work Regulations**

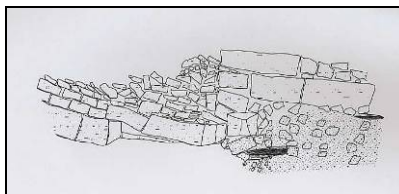
<p>Brehon House Kilkenny Road Castlecomer Co. Kilkenny</p>	<p>Phone +353 (0)56 444 0236 Fax +353 (0)56 444 0237 Internet www.adco-ia.com E-mail info@adco-ia.com</p>
--	--

In association with Valerie J. Keeley Ltd.
Archaeological Consultancy

Recording prehistoric logboat at
Gormanston, Co. Meath
GAS 2025 Irish Sea
Interconnector



Underwater elevation of bridge pier collapsed in
1763. River Nore Flood Alleviation Scheme



Iron cannon on site of 17th-century
timber wreck discovered during
dredging programme, Waterford
Harbour



Railway Procurement Agency
Ghníomhaireacht um Fháil Iamróid
Parkgate Business Centre,
Parkgate Street, Dublin 8, Ireland
Phone +353 1 646 3400
Fax +353 1 646 3401
www.rpa.ie

Responsible for

LUAS METRO

Integrated
Ticketing
System

With funding and
support from

transport21
progress in motion

