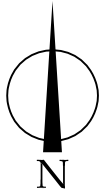


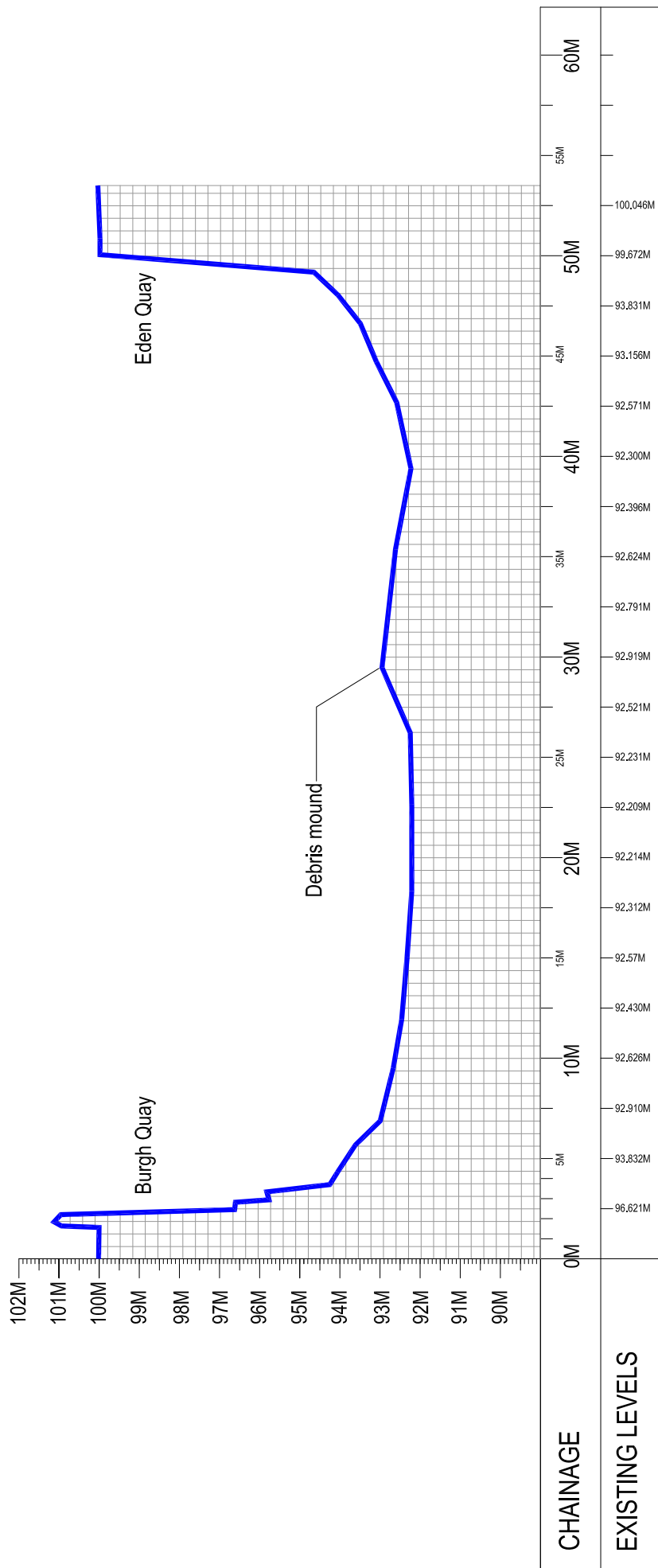


**METRO NORTH
ORAL HEARING**

**Underwater & Intertidal
Archaeological Assessment
River Liffey etc
Part8 C**



River Profile Number 2



**THE ARCHAEOLOGICAL
DIVING COMPANY LTD.**
Tel. 056 4440236 email: info@adco-ie.com

Notes
Survey data Gathered by: O. Ryan

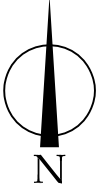
Job/Exc No.
08D094,
08R310,
Date
15.01.09

Compiled by
R. Bangerter/
O. Ryan
Scale
1:300

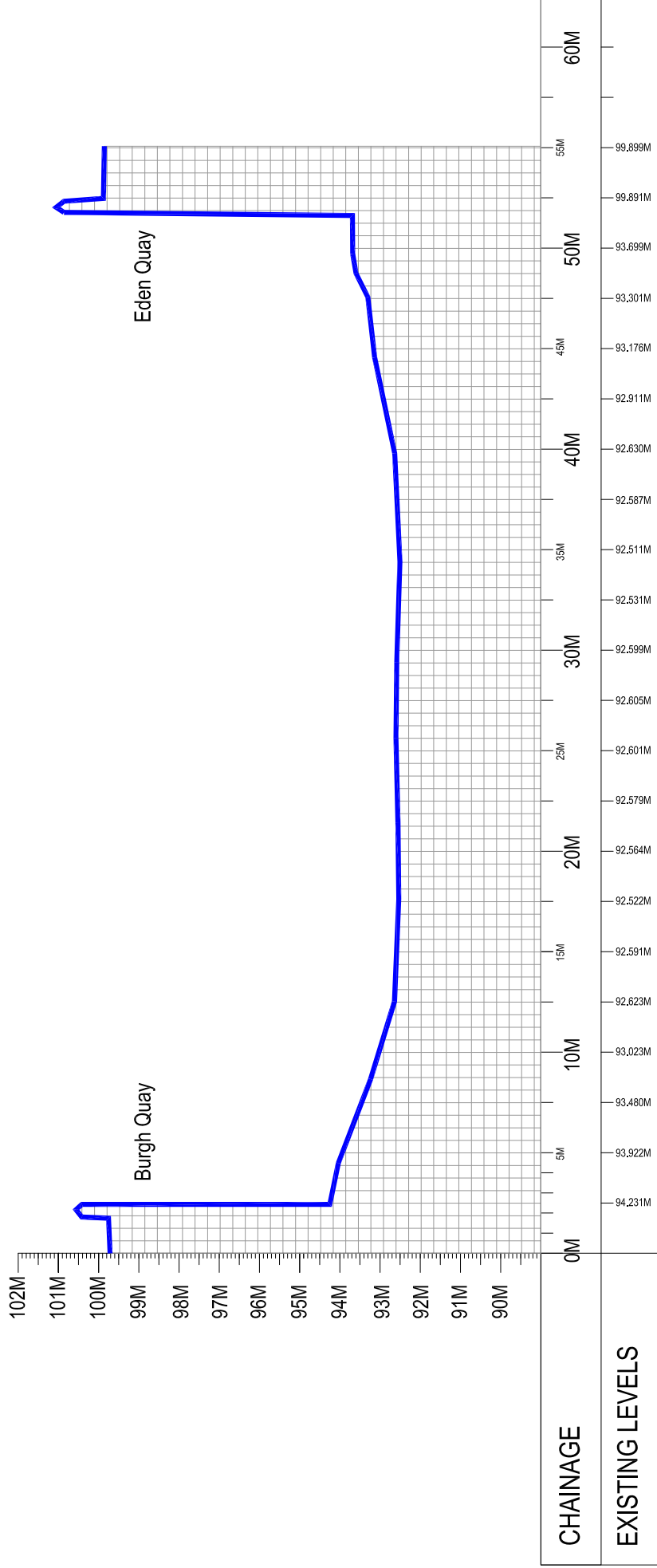
CAD reference
RPA-River Liffey
Drawing No.
Figure 12

Client
Railway Procurement Agency
Project
Metro North- River Liffey, O'Connell Bridge to
Butt Bridge Archaeological Survey.

Title
Figure 12- Profile Number 2: N-S profile across
River Liffey within proposed development area
[see Figure 10 for profile locations].



River Profile Number 3



**THE ARCHAEOLOGICAL
DIVING COMPANY LTD.**
Tel. 056 4440236 email: info@adco-ie.com

Notes
Survey data Gathered by: O. Ryan

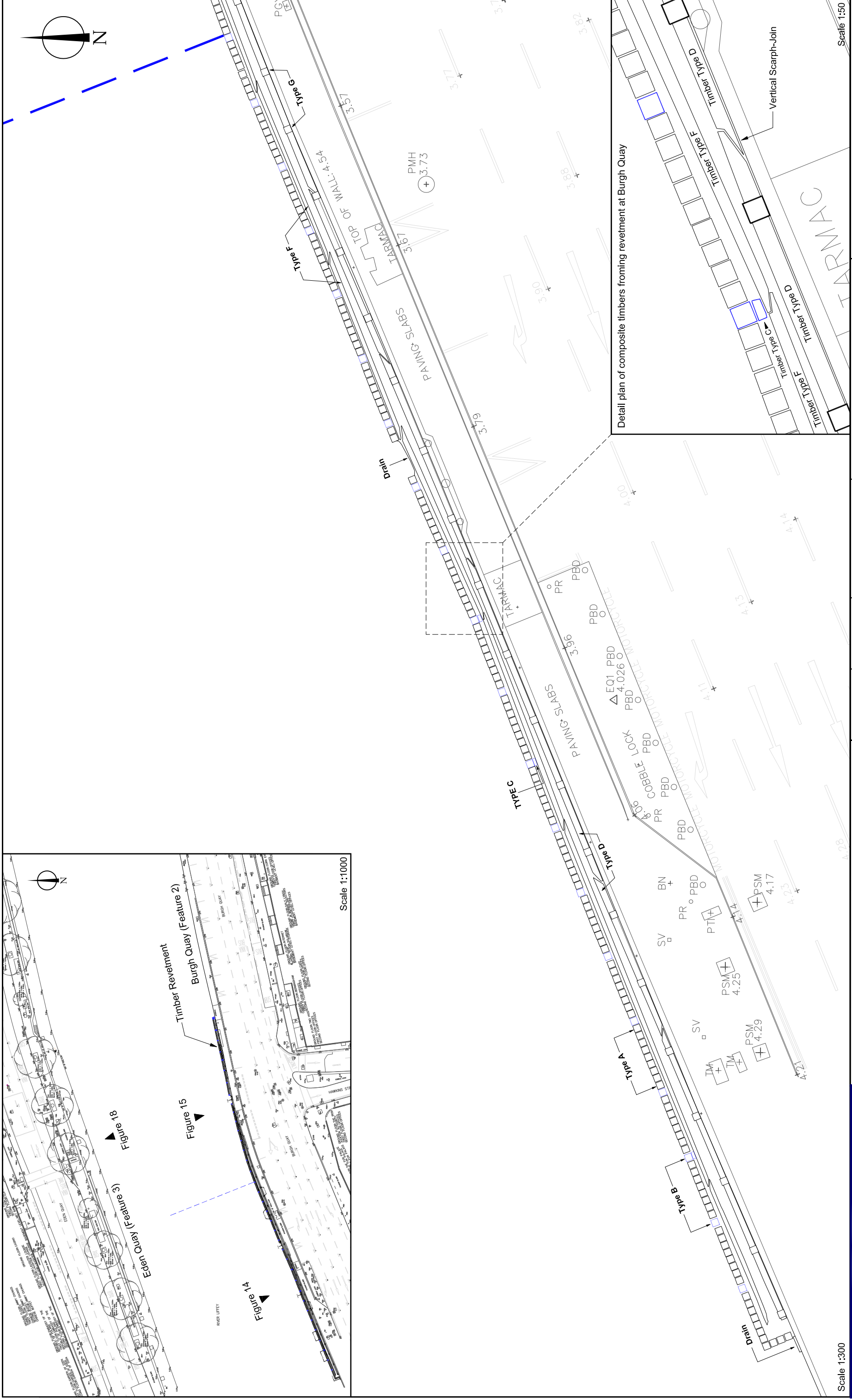
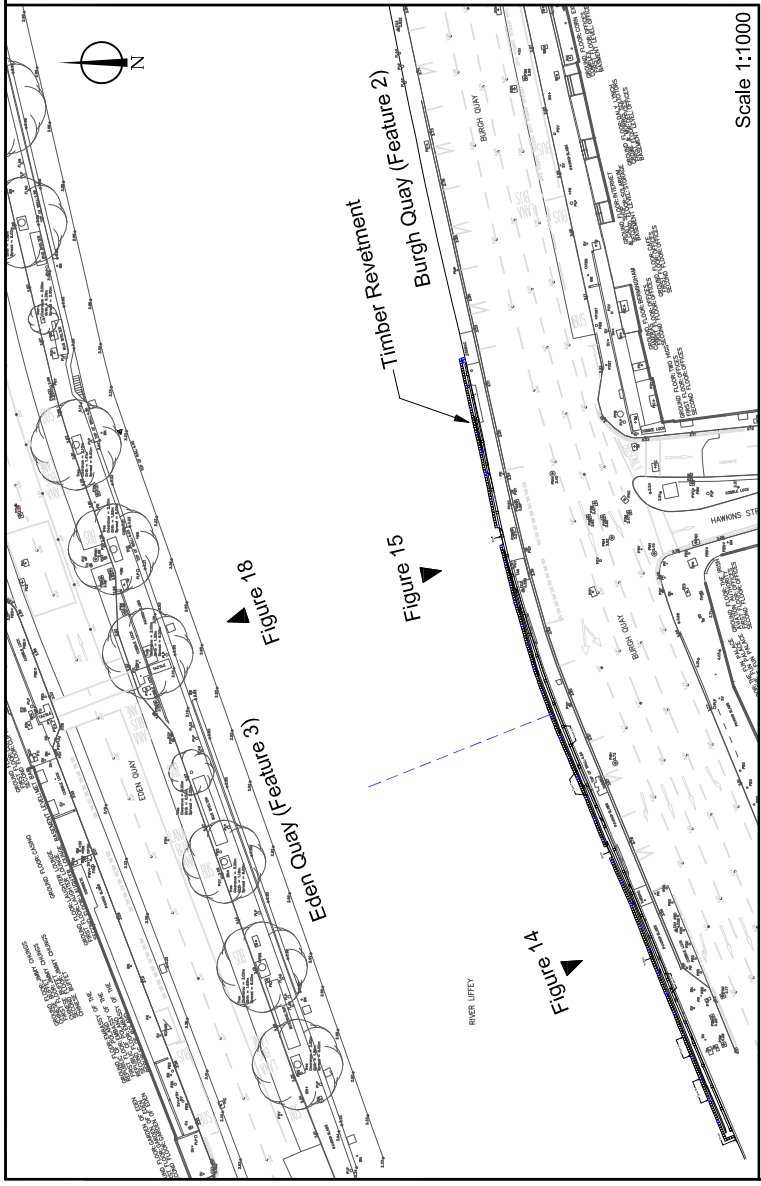
Job/Exc No. 08D094, 08R310,	Date 15.01.09
--	-------------------------

Compiled by R. Bangerter/ O. Ryan	Scale 1:300
--	-----------------------

CAD reference RPA-River Liffey	Drawing No. Figure 13
--	---------------------------------

Client Railway Procurement Agency	Project Metro North- River Liffey, O'Connell Bridge to Butt Bridge Archaeological Survey.
---	---

Title
Figure 13- Profile Number 3; N-S profile across River Liffey within proposed development area [see Figure 10 for profile locations].



Detail plan of composite timbers froming revetment at Burgh Quay

Job/Exc No. 08D094, 08R310 Date 27.01.09		Compiled by R.Banegter Scale 1:300		CAD reference RPA-River Liffey Drawing No. Figure 14		Client Railway Procurement Agency Project Metro North-River Liffey, O'Connell Bridge to Butt Bridge Archaeological Survey.		Title Figure 14- Total Station Plan of western half of Timber Revetment located along base of Burgh Quay (Feature 2).	
--	--	---	--	---	--	---	--	---	--

Notes
Data gathered by O.Ryan and R.Banegter
See Figures: 15,16,17 for additional information regarding Burgh Quay and associated Timber Revetment.

THE ARCHAEOLOGICAL DIVING COMPANY LTD.
Tel. 056 4440236 email: info@adco-ie.com

Railway Procurement Agency
Ghníomhaireacht um Fháil Iamróid
Parkgate Business Centre,
Parkgate Street, Dublin 8, Ireland
Phone +353 1 646 3400
Fax +353 1 646 3401
www.rpa.ie

Responsible for

LUAS METRO

Integrated
Ticketing
System

With funding and
support from

transport21
progress in motion

