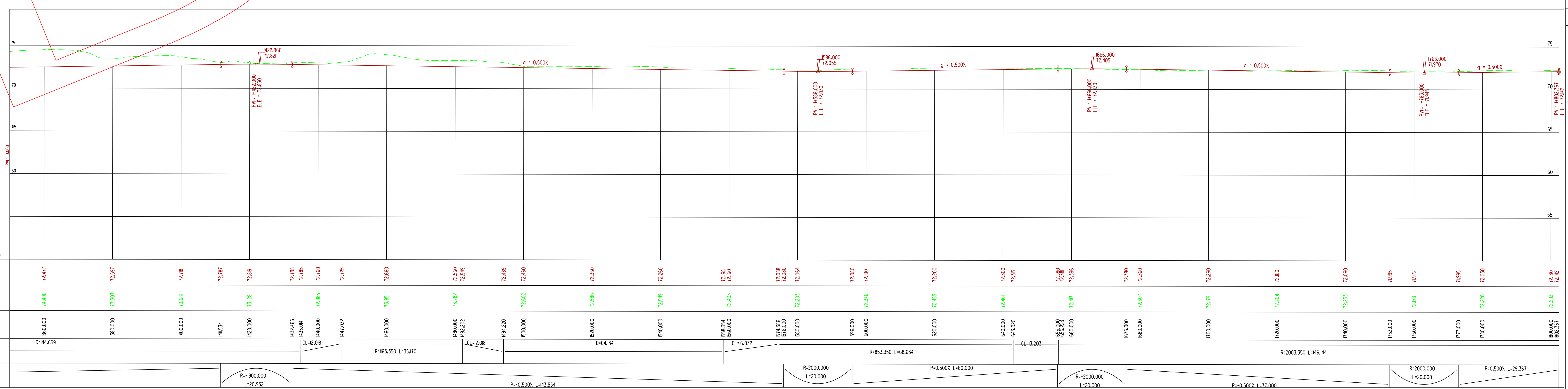


DRAFT

LOCATION PLAN
SCALE 1:500



PROFILE SCALE HS:500 VS:200

OCS NOTES

- O.H.L.E. BUILDING FIXING
- PROPOSED OVER HEAD LINE EQUIPMENT
- O.H.L.E. C-1
- POSITIONS OF POLES AND FIXINGS SUBJECT TO SITE CONDITIONS AND DESIGN DEVELOPMENT
- O.H.L.E. POLES
- METRO TRACK
- METRO TRACK CENTRE LINE
- ROAD MARKINGS
- PROPOSED KERB
- ADJACENT DEVELOPMENT
- SWEEP PATH
- EXTENT OF 1:500 SURVEY
- CARRIAGEWAY BARRIERS
- BLESSINGTON ROAD REALIGNMENT
- FOOTPATH
- CARRIAGEWAY NOTES

GENERAL NOTES

1. ALL DIMENSIONS ARE IN METRES UNLESS OTHERWISE SPECIFIED
2. THE DRAWING SHOWS INDICATIVE LAYOUT ONLY
3. THE HIGHWAY LAYOUT, TRAFFIC SIGNALS, PEDESTRIAN SIGNALS AND ROAD MARKINGS ARE INDICATIVE ONLY
4. SCHEME SUBJECT TO TRAFFIC MODELLING AND DETAILED DESIGN
5. THE BASE MAP MAY NOT INCORPORATE ALL RECENT/ ONGOING DEVELOPMENTS AND THEIR PLACEMENT IS INDICATIVE ONLY UNLESS OTHERWISE STATED
6. CHAINAGE DIRECTION IS FROM SOUTH TO NORTH

"The information contained herein has been provided by RPA but does not purport to be comprehensive or final. Recipients should not rely on the information. Neither RPA nor any of its directors, officers, employees, agents, stakeholders or advisers make any representation or warranty as to, or accept any liability or responsibility in relation to, the adequacy, accuracy, reasonableness or completeness of the information provided as part of this Document or any matter on which the information is based (including but not limited to loss or damage arising as a result of reliance by recipients on the information or any part of it). Any liabilities are hereby expressly disclaimed."

REV	DATE	DESCRIPTION	BY	CHK	APD
B01	11/2009	ISSUED FOR INTERNAL REVIEW ONLY	RPA	AS	HF

KEY MAP - METRO WEST

RPA Railway Procurement Agency

METRO

CONTRACT NO: **MW-0000** AREA: **202D** CHANGE: **1350-1800**

LOCATION: **SLUGBOROUGH-BLANCHARDSTOWN WEST EXIT**

DRAWING TITLE: **PUBLIC CONSULTATION DRAWINGS**

PREPARED: OCT	DESIGNED BY: RPA	CO-ORD CHECK: AS
CHECKED: FBG	CHECKED: AS	APPROVED BY: HF
DATE: NOV 09	AB	AS BUILT BY:

STAGE: **B** LINE: **MW** CONTRACT: **0000** ELEMENT: **PR** DRAW NO: **2016** DRAW REV: **B01**